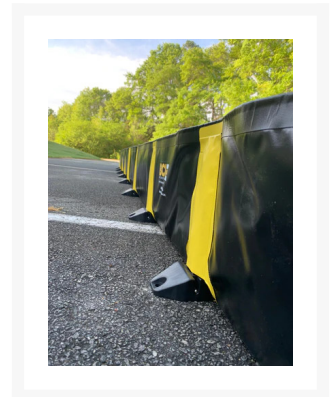
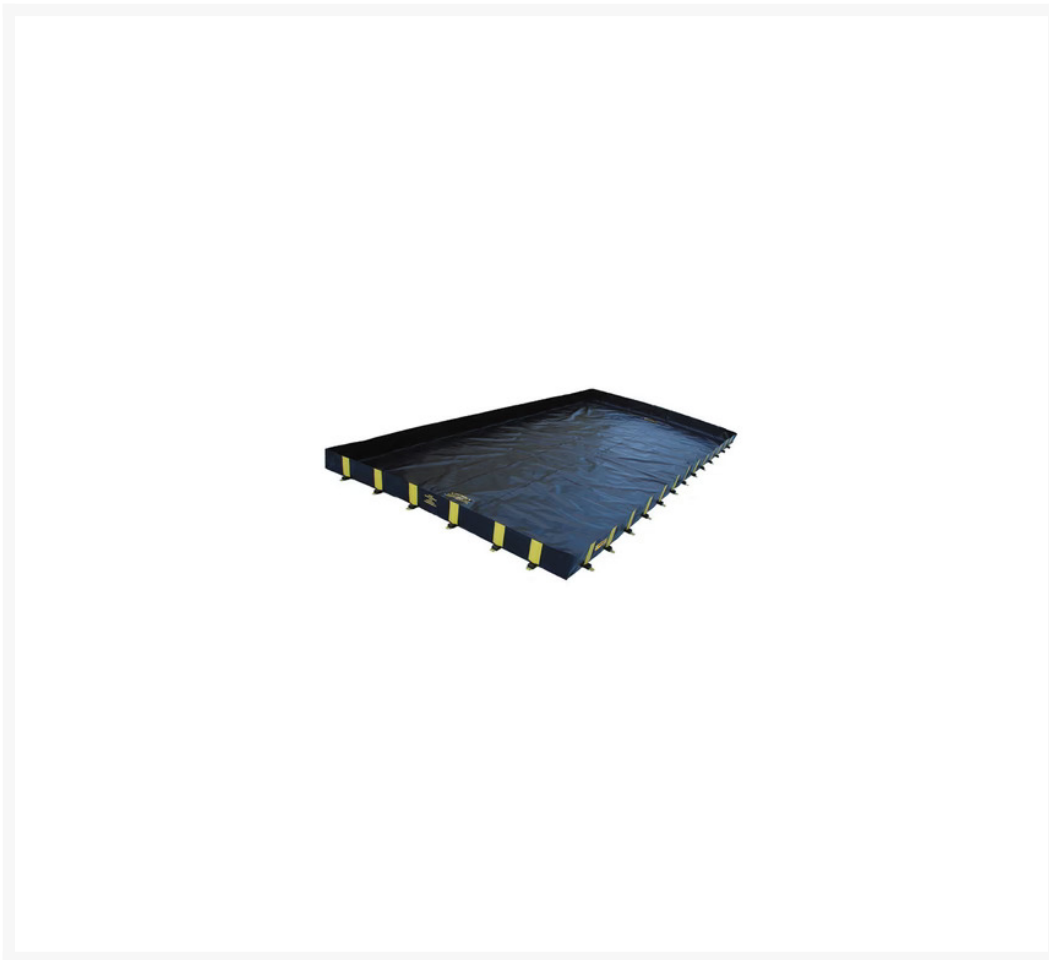


# 48' x 50' Rigid-Lock QuickBerm - 12" Wall Height

## Product Images



## Short Description

- One-piece design – no assembly required and no loose pieces
- Rigid-Lock wall support quickly locks in place by raising the walls and has no trip hazards inside or outside of the berm
- Sides fold down to allow pallet jacks, forklifts, and dollies to be driven into and out of the containment
- Durable fuel and chemical resistant geomembrane liner
- Folds down into compact size for easy transportation and storage

- Can be staked into position through grommets at each support position

## Specifications

---

SKU	1050-05480-026
Brand	BCI
Net Weight, lbs	620
Net Weight, kgs	280.86