

*their safety is essential.*  
Products made to work hard—and built to last.

## Rigid Containment System™ (RCS)

Rugged, leakproof steel containment for heavy-duty equipment

- Each system is water-tested and certified as leakproof
- Fuel-compatible protective coating resists corrosion and will not delaminate from the steel plate
- No assembly required—simply position and drive equipment on it or over it
- Slip-resistant interior surface

Heavy-duty, single-piece construction provides long-term, superior spill protection for vehicles and heavy equipment, such as fuel trucks and fuel pods. Each RCS provides the highest level of protection for even the toughest indoor and outdoor applications.

The fully tested, innovative design eliminates the risk of gasket failures and allows you to relocate or reposition the unit without disassembly. Optional integrated ramps allow you to customize the unit to your needs.



Innovative design requires no assembly during setup and no disassembly to relocate.



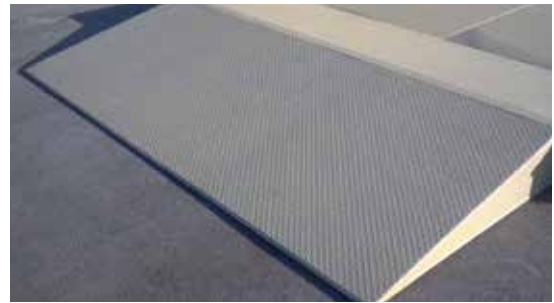
Contains fuel trucks as well as fuel pods.



**Two ramp options are available**

Use one or two optional integrated ramps—one ramp at front for containment systems that back up to a fence or wall, or two ramps positioned at front and back for drive-through convenience.

**For further information call 1-800-285-4203 or visit us online at [BasicConcepts.com](http://BasicConcepts.com)**



Dimensions W x L x H	Capacity	Part Number	Application
12 ft x 30 ft x 10 in 4 m x 9 m x 254 mm	2000 gal 7571 L	9002-02503-RCS	5- or 7-ton tanker
12 ft x 40 ft x 10 in 4 m x 12 m x 254 mm	2800 gal 10,599 L	9002-02500-RCS	2500-gal HEMTT
12 ft x 80 ft x 10 in 4 m x 24 m x 254 mm	5600 gal 21,198 L	9002-02501-RCS	5000-gal tanker

BCI is a portfolio company of Justrite Safety Group. Justrite Safety Group is a growing family of leading industrial safety companies. Together we protect workers, workplaces and the environment with a comprehensive range of industrial safety solutions. We cover every facet of the industrial safety landscape—from the storage, containment and clean-up of hazardous materials to safety identification, emergency showers, industrial matting, and motion safety.