

Dedicated



Environmental Protection and Containment Solutions

For the Military

Find convenient **National Stock Numbers (NSN)** inside

Basic Concepts (BCI) is a portfolio company of Justrite Safety Group™

For more than a century, Justrite has kept workers safe. We're trusted experts dedicated to protecting where the world works, ensuring every customer achieves compliance to regulations, and follows best practices for a safe and productive workplace.

Expert





Start with the EssentialSM

Justrite Safety Group is a growing family of leading industrial safety companies. We are united by deep safety knowledge, long experience, and a commitment to protecting people, property and the planet.

Together We Protect What Matters Most

Justrite Safety Group salutes all service branches of the Armed Forces—Air Force, Army, Coast Guard, Marine Corps, and Navy. We honor your service and thank you for protecting us.

People spend much of their lives at work, whether on the production line, in the laboratory, or on a military mission—their safety is essential. Justrite Safety Group portfolio companies operate around the world—and around the clock—providing the essential safety and environmental protection solutions needed to create a strong foundation at work.

Basic Concepts (BCI) specializes in products designed for efficient transport and deployment in the field. Beyond our patented Fail-Safe[®] MilBerm[™] available for use under generators, POL containment, trucks with fuel pods, and under the 2500 gallon fuel HEMMET, we also provide:

- DynaLoc[™] explosive storage magazines
- Outdoor hazardous material storage buildings
- Emergency safety showers and eye/face washes
- Noise reduction barriers



Contents

Contents

<i>Table of Contents and How to Order</i>	4 - 5
<i>Order by National Stock Number</i>	6 - 7
<i>SPILL CONTAINMENT</i>	
Fail-Safe® MilBerm™	8 - 11
Rigid Containment System™ (RCS)	12
Modular Channel MilBerm™	13
All-Terrain Berm™	14 - 15
MilBerm™ Lite	16
Ground and Track Berm Guards	17
Drip Berms	18
Battery/Maintenance Spill Pads	19
Eagle Modular Spill Platform	20
Eagle Spill Containment Pallets	21
<i>CHEMICAL STORAGE</i>	
U.S. Chemical Storage® Buildings and Lockers	22 - 25
<i>EXPLOSIVES STORAGE</i>	
U.S. Chemical Storage® Explosive Storage Magazines	26 - 27
<i>EMERGENCY RESPONSE EQUIPMENT</i>	
Hughes Safety Showers and Eye/Face Washes	28 - 29
<i>NOISE ABATEMENT</i>	
Noise Reduction Barriers	30
<i>SPCC INFORMATION</i>	31

How to order



NSN Indicator

When you see ■ in the first column of an ordering chart, it confirms that an NSN number is available for that product.

Phone

1-800-285-4203

*8 a.m. to 5 p.m. Eastern Standard Time,
Monday through Friday*

Fax

1-864-224-7063

Online

Order by National Stock Number (NSN).
See pages 6 - 7

GSA Advantage
www.gsaadvantage.gov

For GSA Advantage orders,
use GSA contract # GS07F069GA.

Payment Options

Government IMPAC card, check, and
bank wires.

Helpful Information

FEDERAL ID NUMBER: 57-0861349

GOVERNMENT CAGE CODE: 0V4E7

DUNS NUMBER: 803690247

CCR NUMBER: 1996K253398



Order by National Stock Number

Fail-Safe® MilBerm™ Kit

NSN	Description	Application	Capacity	CA Prop 65
4235-01-621-7309	Fail-Safe® MilBerm™ 4 ft x 6 ft x 1 ft Kit	Small gensets/ POL storage	179 gal	⚠
4235-01-621-7227	Fail-Safe® MilBerm™ 10 ft x 10 ft x 1 ft Kit	15K-60K generators/ POL storage	748 gal	⚠
4235-01-621-7327	Fail-Safe® MilBerm™ 10 ft x 16 ft x 1 ft Kit	100K generators/ POL storage	1196 gal	⚠
4235-01-621-7217	Fail-Safe® MilBerm™ 12 ft x 26 ft x 1 ft Kit	5 and 7 ton with fuel pods	2333 gal	⚠
4235-01-621-7317	Fail-Safe® MilBerm™ 12 ft x 30 ft x 1 ft Kit	5 or 7 ton with fuel pods	2692 gal	⚠
4235-01-621-7288	Fail-Safe® MilBerm™ 12 ft x 36 ft x 1 ft Kit	HEMTT 2,500 gallon fuel tanker and FRC	3231 gal	⚠
4235-01-621-7290	Fail-Safe® MilBerm™ 14 ft x 54 ft x 1 ft Kit	5,000 gallon tanker	5654 gal	⚠
4235-01-621-7292	Fail-Safe® MilBerm™ 14 ft x 56 ft x 1 ft Kit	5,000 gallon tanker	5864 gal	⚠

⚠ WARNING: This product can expose you to chemicals including lead, which is known to the State of California to cause cancer and birth defects or other reproductive harm, and nickel, which is known to the state of California to cause cancer. For more information go to www.P65Warnings.ca.gov.



Package includes:

- (1) Fail-Safe® MilBerm™
- (2) ground protection mats
- (2) track protection mats
- (1) deluxe repair kit

Fail-Safe® MilBerm™

NSN	Description	Application	Capacity	CA Prop 65
4235-01-387-1381	Fail-Safe® MilBerm™ 4 ft x 6 ft x 1 ft	Small generators/ POL storage	179 gal	⚠
4235-01-387-1498	Fail-Safe® MilBerm™ 10 ft x 10 ft x 1 ft	15K-60K generators/ POL storage	748 gal	⚠
4235-01-670-1849	Fail-Safe® MilBerm™ 10 ft x 16 ft x 1 ft	100K generators/ POL storage	1196 gal	⚠
4235-01-569-8818	Fail-Safe® MilBerm™ 12 ft x 26 ft x 1 ft	5 and 7 ton with fuel pods	2333 gal	⚠
4235-01-569-8792	Fail-Safe® MilBerm™ 12 ft x 30 ft x 1 ft	5 or 7 ton with fuel pods	2692 gal	⚠
4235-01-569-8833	Fail-Safe® MilBerm™ 12 ft x 36 ft x 1 ft	HEMTT 2,500 gallon fuel tanker and FRC	3231 gal	⚠
4235-01-550-3802	Fail-Safe® MilBerm™ 14 ft x 54 ft x 1 ft	5,000 gallon tanker	5654 gal	⚠
4235-01-569-8848	Fail-Safe® MilBerm™ 14 ft x 56 ft x 1 ft	5,000 gallon tanker	5864 gal	⚠

⚠ WARNING: This product can expose you to chemicals including lead, which is known to the State of California to cause cancer and birth defects or other reproductive harm, and nickel, which is known to the state of California to cause cancer. For more information go to www.P65Warnings.ca.gov.



Hydrocarbon Capture Device and Repair Kit

NSN	Description	Application	CA Prop 65
4330-01-554-9493	Hydrocarbon capture device	Hydrocarbon filter/plug	⚠
4235-01-550-0900	Deluxe repair kit	Repair of berm material	⚠

⚠ WARNING: This product can expose you to chemicals including toluene, which is known to the State of California to cause cancer and birth defects or other reproductive harm. For more information go to www.P65Warnings.ca.gov.



Extended Drip Berm

NSN	Description	Application	Capacity	CA Prop 65
4235-01-593-3974	Extended Drip Berm 24 ft x 36 in	Drip containment under equipment	2 gal	⚠

⚠ WARNING: This product can expose you to chemicals including lead, which is known to the State of California to cause cancer and birth defects or other reproductive harm. For more information go to www.P65Warnings.ca.gov.



MilBerm™ Lite

NSN	Description	Application	Capacity	CA Prop 65
4235-01-562-6025	MilBerm™ Lite, 18 oz tan vinyl, 4 ft x 6 ft x 8 in	General secondary containment	119 gal	⚠
4235-01-562-3899	MilBerm™ Lite, 18 oz tan vinyl, 6 ft x 6 ft x 8 in	General secondary containment	179 gal	⚠

⚠ WARNING: This product can expose you to chemicals including diisononyl phthalate and lead, which are known to the State of California to cause cancer and birth defects or other reproductive harm. For more information go to www.P65Warnings.ca.gov.





All-Terrain Berm™ for Fuel Bladders

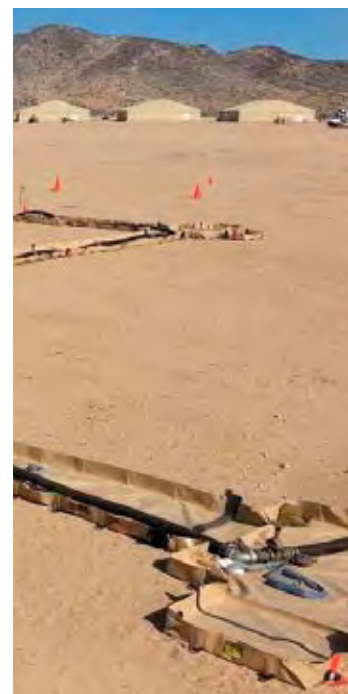
NSN	Dimensions W x L x H	Capacity	Part No	CA Prop 65	Application
■ 4235-01-669-0049	20 ft x 20 ft x 3 ft 6.1 m x 6.1 m x 0.9 m	10,300 gal 38,990 L	BCI-ATB-3K-KIT	⚠	Secondary containment of fuel bladders and bags; metal storage tanks; transformers; waste materials; and other products
■ 4235-01-668-8399	36 ft x 36 ft x 3 ft 11.0 m x 11.0 m x 0.9 m	31,500 gal 119,240 L	BCI-ATB-20K-KIT	⚠	
■ 4235-01-668-9796	36 ft x 80 ft x 3 ft 11.0 m x 24.4 m x 0.9 m	68,500 gal 259,300 L	BCI-ATB-50K-KIT	⚠	

⚠ WARNING: This product can expose you to chemicals including lead, which is known to the State of California to cause cancer and birth defects or other reproductive harm. For more information go to www.P65Warnings.ca.gov.

Modular Channel MilBerm™ Components

NSN	Description	CA Prop 65	Application
■ 4235-01-618-9117	Modular Channel MilBerm™ 4 ft x 2 ft x 8 in middle section	⚠	Modular component part
■ 4235-01-618-9111	Modular Channel MilBerm™ 4 ft x 6 ft x 8 in middle section	⚠	
■ 4235-01-618-9108	Modular Channel MilBerm™ 4 ft x 10 ft x 8 in middle section	⚠	
■ 4235-01-618-8601	Modular Channel MilBerm™ 4 ft x 20 ft x 8 in middle section	⚠	
■ 4235-01-618-8580	Modular Channel MilBerm™ 4 ft x 20 ft x 8 in earthen berm section	⚠	
■ 4235-01-618-8589	Modular Channel MilBerm™ 8 ft x 8 ft x 8 in 4-way intersection	⚠	
■ 4235-01-618-9000	Modular Channel MilBerm™ 8 ft x 8 ft x 8 in pump/ filter thru-point intersection	⚠	
■ 4235-01-618-9049	Modular Channel MilBerm™ 14 ft x 14 ft x 8 in pump/ filter thru-point intersection	⚠	
■ 4235-01-618-9056	Modular Channel MilBerm™ 14 ft x 14 ft x 8 in 4-way intersection	⚠	
■ 4235-01-618-9023	Modular Channel MilBerm™ 4 ft x 6 ft x 8 in right angle section	⚠	
■ 4235-01-618-9039	Modular Channel MilBerm™ 4 ft x 2 ft end cap	⚠	
■ 4235-01-618-9004	Modular Channel MilBerm™ Fail-Safe® 3-sided drive-thru 12 ft x 14 ft x 1 ft	⚠	
■ 4235-01-618-9121	Modular Channel MilBerm™ 12 ft x 24 ft x 8 in pump/tank containment	⚠	
■ 4235-01-618-9105	Modular Channel MilBerm™ section connection adapter	⚠	Modular system maintenance
■ 4235-01-618-8295	Modular Channel MilBerm™ field maintenance kit	⚠	
■ 8145-01-618-9123	Modular Channel MilBerm™ 45 in x 48 in knockdown storage box	⚠	Modular system storage box

⚠ WARNING: This product can expose you to chemicals including lead, which is known to the State of California to cause cancer and birth defects or other reproductive harm. For more information go to www.P65Warnings.ca.gov.



Spill Berm Guard

NSN	Description (Set of 2)	Application
■ 4235-01-618-7897	3 ft x 10 ft Spill berm guard	Interior berm protection
■ 4235-01-618-7902	3 ft x 16 ft Spill berm guard	
■ 4235-01-618-7906	3 ft x 26 ft Spill berm guard	
■ 4235-01-618-7911	3 ft x 30 ft Spill berm guard	
■ 4235-01-618-8187	3 ft x 36 ft Spill berm guard	
■ 4235-01-618-8193	3 ft x 54 ft Spill berm guard	
■ 4235-01-618-8542	3 ft x 56 ft Spill berm guard	
■ 4235-01-618-8532	4 ft x 6 ft Spill berm guard	Under berm protection
■ 4235-01-618-7901	6 ft x 10 ft Spill berm guard	
■ 4235-01-618-8264	6 ft x 16 ft Spill berm guard	
■ 4235-01-618-7881	6 ft x 26 ft Spill berm guard	
■ 4235-01-618-7917	6 ft x 30 ft Spill berm guard	
■ 4235-01-618-8190	6 ft x 36 ft Spill berm guard	
■ 4235-01-618-7891	6 ft x 54 ft Spill berm guard	
■ 4235-01-618-6850	6 ft x 56 ft Spill berm guard	





Reinforced, wraparound design prevents seam leaks for fluid-tight reliability.

Fail-Safe® MilBerm™

Heavy-duty construction provides long-term spill containment for vehicles, heavy equipment, tankers, generators, and more

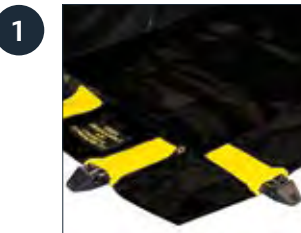
- Single-piece construction—patented wall-support system integral to berm provides unobstructed work space
- Provides faster deployment—stronger structural integrity
- Quick and easy setup—no assembly required
- Heavy-duty BC3CF fabric stands up to corrosive solvents and extended wear
- Fail-Safe® flotation device on entry/exit walls, enabling drive-in and drive-out with no need to raise or lower wall
- When in the upright and locked position, wall supports prevent snow and ice from interfering during a spill occurrence

Fail-Safe® flotation device incorporated on entry/exit walls.



Clean lines of the berm with no obstruction either on the berm interior or exterior.

**No assembly needed—
saves time, ready in minutes!**



Unfold berm, exposing supports in flat position.



A simple tug locks supports in upright position.



Fully deployed for quick spill readiness!

⚠ **WARNING:** This product can expose you to chemicals including lead, which is known to the State of California to cause cancer and birth defects or other reproductive harm, and nickel, which is known to the state of California to cause cancer. For more information go to www.P65Warnings.ca.gov.

Fail-Safe® MilBerm™ (continued)

The Fail-Safe® MilBerm™ offers superior protection and chemical resistance against the harshest of liquids, including petroleum, oils, greases, and most acids.

Unlike floating-wall-type berms that are susceptible to wall collapse and containment failure, the patented wall support design features a stainless steel brace that supports the wall at a full 90° locked position for secure, leakproof containment. A simple push on the walls unlocks the support and lays the wall down for drive-through capability from any angle. The end walls also feature the patented Fail-Safe® flotation device that allows the user to leave the entry/exit walls in the down position, weather permitting. This feature enables the walls to auto-deploy to the upright position using the dynamics of fluid pressure to push the wall up without allowing a spill event. The end walls also include the wall support with locking detent to keep the end walls upright should snow or ice be forecasted.



Folded Fail-Safe® MilBerm™ securely attached to the HEMTT tanker for deployment at a moment's notice.

The ingenious Fail-Safe® MilBerm™ built-in wall support design deploys instantly while minimizing drive-over damage and tripping hazards.



10 Spill Containment

Fail-Safe® MilBerm™ (continued)

The built-in patented wall supports maximize usable space inside the berm and greatly reduce any tripping hazard on the berm perimeter. Reinforced corner design with wraparound diagonal radio frequency welds offers exceptionally strong structural integrity to prevent seam leaks, provide fluid-tight reliability, and extend berm life expectancy. Finished hem edge on top of sidewall prevents fraying and adds strength. Each support includes a built-in staking point for anchoring the berm under high wind conditions. Anchor stakes are not included.

Helps comply with EPA for containment and spill prevention (SPCC).



Fail-Safe® flotation device on both the entry and exit walls is self-erecting and will rise as the fluid level rises. The entry/exit walls also have the brace support, which will lock into position with the rising fluid level.

Patented support mechanism



Sets up to a 90° locked position. Integrated holes in hub permit easy anchoring.



Stainless steel support is encased in protective hub to withstand vehicle traffic.

Corner construction



Reinforced, wraparound design prevents seam leaks for fluid-tight reliability.

	NSN	Dimensions W x L x H	Capacity	Weight	Folded Size	Part No	Application	CA Prop 65
■	4235-01-387-1381	4 ft x 6 ft x 1 ft 1.2 m x 1.8 m x 0.3 m	179 gal 678 L	28 lbs 13 kg	30 in x 30 in x 6 in 762 mm x 762 mm x 152 mm	BC3CF-RLFS-0406 SPILL BERM	Small generators/ POL storage	⚠
■	4235-01-387-1498	10 ft x 10 ft x 1 ft 3.0 m x 3.0 m x 0.3 m	748 gal 2832 L	69 lbs 42 kg	30 in x 30 in x 12 in 762 mm x 762 mm x 305 mm	BC3CF-RLFS-1010 SPILL BERM	15-60K generators/ POL storage	⚠
■	4235-01-670-1849	10 ft x 16 ft x 1 ft 3.0 m x 4.9 m x 0.3 m	1196 gal 4527 L	81 lbs 37 kg	30 in x 30 in x 14 in 762 mm x 762 mm x 356 mm	BC3CF-RLFS-1016 SPILL BERM	100K generators/ POL storage	⚠
■	4235-01-569-8818	12 ft x 26 ft x 1 ft 3.7 m x 7.9 m x 0.3 m	2333 gal 8831 L	147 lbs 67 kg	36 in x 36 in x 12 in 914 mm x 914 mm x 305 mm	BC3CF-RLFS-1226 SPILL BERM	5- or 7-ton truck with fuel pods	⚠
■	4235-01-569-8792	12 ft x 30 ft x 1 ft 3.7 m x 9.1 m x 0.3 m	2592 gal 9812 L	164 lbs 74 kg	36 in x 36 in x 16 in 914 mm x 914 mm x 406 mm	BC3CF-RLFS-1230 SPILL BERM	5- or 7-ton truck with fuel pods	⚠
■	4235-01-569-8833	12 ft x 36 ft x 1 ft 3.7 m x 11.0 m x 0.3 m	3231 gal 12,231 L	190 lbs 86 kg	36 in x 36 in x 16 in 914 mm x 914 mm x 406 mm	BC3CF-RLFS-1236 SPILL BERM	2500-gal HEMTT and FRC	⚠
■	4235-01-550-3802	14 ft x 54 ft x 1 ft 4.3 m x 16.5 m x 0.3 m	5654 gal 21,403 L	296 lbs 134 kg	42 in x 36 in x 18 in 1067 mm x 914 mm x 457 mm	BC3CF-RLFS-1454 SPILL BERM	5000-gal tanker	⚠
■	4235-01-569-8848	14 ft x 56 ft x 1 ft 4.3 m x 17.1 m x 0.3 m	5864 gal 22,198 L	305 lbs 138 kg	42 in x 36 in x 18 in 1067 mm x 914 mm x 457 mm	BC3CF-RLFS-1456 SPILL BERM	5000-gal tanker	⚠

See page 17 for ground and track mats to provide extra resistance against rocky surfaces or heavy in-out traffic use.

⚠ **WARNING:** This product can expose you to chemicals including lead, which is known to the State of California to cause cancer and birth defects or other reproductive harm, and nickel, which is known to the state of California to cause cancer. For more information go to www.P65Warnings.ca.gov.



Steel Rigid Containment System for long term containment of fuel trucks and pods.



Fail-Safe® MilBerm™ safely captures leaks or spills during refueling operations.



Portable Fail-Safe® MilBerm™ is suitable for containing generators.

Military Environmental Stewardship

With more than 25 years of trusted expertise in spill containment, Basic Concepts (BCI) offers military-approved containment solutions designed for efficient transport and deployment in the field. Flexible Fail-Safe® MilBerm™ features easy portability and fast deployment, while the steel design of the Rigid Containment System provides long-term spill protection for vehicles and heavy equipment. All systems comply with local, state, and federal environmental spill regulations, as well as branch-specific regulations.

Army Regulation 200-1 – Environmental Protection and Enhancement

"The Army is committed to environmental stewardship in all actions as an integral part of the Army mission."

Marine regulation MCO P5090.2A – Environmental Compliance and Protection Manual

"The Marine Corps shall actively protect and enhance the quality of the environment through strict compliance with all applicable regulatory requirements."

Reference (FM 3-100-4/MCRP 4-11B Environmental Consideration in Military Operations)

Basic Concepts (BCI) is committed to designing and manufacturing spill prevention products to help implement brand-specific regulations and standard operating procedures. Standard and custom sizes are available to meet Spill Prevention Control and Containment Plan requirements. For more on SPCC, see page 31.



Rigid Containment System™ (RCS)

Rugged, leakproof steel containment for heavy-duty equipment

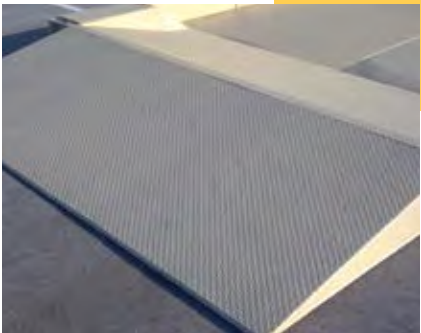
- Each system is water-tested and certified as leakproof
- Fuel-compatible protective coating resists corrosion and will not delaminate from the steel plate
- No assembly required—simply position and drive equipment on it or over it
- Slip-resistant interior surface

Heavy-duty, single-piece construction provides long-term, superior spill protection for vehicles and heavy equipment, such as fuel trucks and fuel pods. Each RCS provides the highest level of protection for even the toughest indoor and outdoor applications.

The fully tested, innovative design eliminates the risk of gasket failures and allows you to relocate or reposition the unit without disassembly. An optional integrated exterior ramp allows you to customize the unit to your needs.



Contains fuel trucks as well as fuel pods.



Integrated exterior ramp.



Innovative design requires no assembly during setup and no disassembly to relocate.

Dimensions W x L x H	Capacity	Part No	Application
12 ft x 30 ft x 10 in 4 m x 9 m x 254 mm	2000 gal 7571 L	RCS360/144/10INTR	5- or 7-ton tanker
12 ft x 40 ft x 10 in 4 m x 12 m x 254 mm	2800 gal 10,599 L	RCS480/144/10INTR	2500-gal HEMTT
12 ft x 80 ft x 10 in 4 m x 24 m x 254 mm	5600 gal 21,198 L	RCS960/144/10INTR	5000-gal tanker

The 12-foot-by-80-foot-by-10-inch unit is comprised of two 12-foot-by-40-foot-by-10-inch units that are attached together.

Modular Channel MilBerm™

Portable, liquid-tight containment for hoses and pipes

- Flexible modular design allows you to form any configuration
- Standard 4-ft width—custom sizes available
- No assembly required—sets up easily in the field
- Proprietary design with input from the U.S. military

The Modular Channel MilBerm's folding brace system features supports that lock the wall in an 8-in-tall, 90° vertical position when deployed. The inclined leg support is only 1.5-in from the ground for mobility and ease of use. Simply pull up on the perimeter wall and the unit will lock into a vertical position. To lower the wall, push in on it and the lock will release, allowing the Modular Channel MilBerm™ to lie flat on the floor.

Each section has open ends and tongue-and-groove closures that form a liquid-tight closure.



Sections attach quickly with a state-of-the-art LiquidSeal™ resealable connection that provides a liquid-tight closure.



NSN		Description	Dimensions W x L x H	CA Prop 65	Application
■	4235-01-618-9117	Modular Channel MilBerm™ middle section	4 ft x 2 ft x 8 in 1.2 m x 0.6 m x 203 mm	⚠	Modular component part
■	4235-01-618-9111	Modular Channel MilBerm™ middle section	4 ft x 6 ft x 8 in 1.2 m x 1.8 m x 203 mm	⚠	
■	4235-01-618-9108	Modular Channel MilBerm™ middle section	4 ft x 10 ft x 8 in 1.2 m x 3.0 m x 203 mm	⚠	
■	4235-01-618-8601	Modular Channel MilBerm™ middle section	4 ft x 20 ft x 8 in 1.2 m x 6.1 m x 203 mm	⚠	
■	4235-01-618-8580	Modular Channel MilBerm™ earthen berm section	4 ft x 20 ft x 8 in 1.2 m x 6.1 m x 203 mm	⚠	
■	4235-01-618-8589	Modular Channel MilBerm™ 4-way intersection	8 ft x 8 ft x 8 in 2.4 m x 2.4 m x 203 mm	⚠	
■	4235-01-618-9000	Modular Channel MilBerm™ pump/filter thru-point intersection	8 ft x 8 ft x 8 in 2.4 m x 2.4 m x 203 mm	⚠	
■	4235-01-618-9049	Modular Channel MilBerm™ pump/filter thru-point intersection	14 ft x 14 ft x 8 in 4.3 m x 4.3 m x 203 mm	⚠	
■	4235-01-618-9056	Modular Channel MilBerm™ 4-way intersection	14 ft x 14 ft x 8 in 4.3 m x 4.3 m x 203 mm	⚠	
■	4235-01-618-9023	Modular Channel MilBerm™ right angle section	4 ft x 6 ft x 8 in 1.2 m x 1.8 m x 203 mm	⚠	
■	4235-01-618-9039	Modular Channel MilBerm™ end cap	4 ft x 2 ft 1.2 m x 0.6 m	⚠	
■	4235-01-618-9004	Modular Channel MilBerm™ Fail-Safe® 3-sided drive-thru	12 ft x 14 ft x 1 ft 3.7 m x 4.3 m x 0.3 m	⚠	
■	4235-01-618-9121	Modular Channel MilBerm™ pump/tank containment	12 ft x 24 ft x 8 in 3.7 m x 7.3 m x 203 mm	⚠	
■	4235-01-618-9105	Modular Channel MilBerm™ section connector adapter	—	⚠	Field maintenance kit
■	4235-01-618-8295	Modular Channel MilBerm™ field maintenance kit			
■	8145-01-618-9123	Modular Channel MilBerm™ knockdown storage box	45 in x 48 in 1143 mm x 1219 mm	⚠	Modular system storage box

⚠ WARNING: This product can expose you to chemicals including lead, which is known to the State of California to cause cancer and birth defects or other reproductive harm. For more information go to www.P65Warnings.ca.gov.

All-Terrain Berm™

Portable solution for fuel bladder containment

- Designed for field deployment—no tools required
- Deploys quickly and easily without heavy equipment
- Quick-set aluminum A-frame support
- 3-ft-tall walls
- WaveGuard™ for splashout prevention

Five people can assemble the heavy-duty All-Terrain Berm™ in the field in less than an hour – even on the most demanding terrain. Designed for the utmost flexibility and security, the berm adapts to the contour of the ground.

The All-Terrain Berm™ contains fuel bags and bladders, metal storage tanks, transformers, waste materials and many other products.

Trusted

When it comes to environmental spill protection, the U.S. military relies on Basic Concepts (BCI).



Fuel being transferred from a tanker to a storage bag with the All Terrain Berm™ providing secondary containment.

All-Terrain Berm™ for Fuel Bladders

NSN		Dimensions W x L x H	Capacity	Part No	CA Prop 65	Application
■	4235-01-669-0049	20 ft x 20 ft x 3 ft 6.1 m x 6.1 m x 0.9 m	10,300 gal 38,990 L	BCI-ATB-3K-KIT	⚠	Secondary containment of fuel bladders and bags; metal storage tanks; transformers; waste materials; and other products
		28 ft x 28 ft x 3 ft 8.5 m x 8.5 m x 0.9 m	19,000 gal 71,932 L	BCI-HWB-10K-KIT	⚠	
■	4235-01-668-8399	36 ft x 36 ft x 3 ft 11.0 m x 11.0 m x 0.9 m	31,500 gal 119,240 L	BCI-ATB-20K-KIT	⚠	
■	4235-01-668-9796	36 ft x 80 ft x 3 ft 11.0 m x 24.4 m x 0.9 m	68,500 gal 259,300 L	BCI-ATB-50K-KIT	⚠	
		100 ft x 100 ft x 3 ft 30.5 m x 30.5 m x 0.9 m	231,000 gal 874,430 L	BCI-ATB-210K-KIT	⚠	

⚠ WARNING: This product can expose you to chemicals including lead, which is known to the State of California to cause cancer and birth defects or other reproductive harm. For more information go to www.P65Warnings.ca.gov.

Field application of the All-Terrain Berm™ containing a flexible fuel tank. The All-Terrain Berm™ can be field-deployed by five people in 45 minutes on rough terrain. The individual aluminum A-frames enable the unit to adapt to the contour of the ground.



Use All-Terrain Berm™ for containing fuel bags and bladders of all sizes. Other uses include containing metal storage tanks, transformers, and waste products.

MilBerm™ Lite

Portable, versatile containment berm
deploys quickly

- Made of tough but lightweight 18-ounce vinyl coated fabric
- Easy handling, fast deployment
- Inside brace support eliminates tripping hazards
- Built for smaller containment needs
- Packs quickly and folds down to a compact storage size

Leakproof, tough vinyl coated fabric provides broad UV and chemical resistance that withstands repeated usage. Reinforced inside supports reduce sagging and prevent tripping hazards that can be caused by outside supports. Lightweight berm folds down easily to a small size for storage in trucks, emergency vehicles, and spill kits. Add optional grates to help reduce contact with contaminated liquids by personnel or equipment. Helps comply with EPA for containment and spill prevention (SPCC).



Single-piece, lightweight construction makes MilBerm™ Lite effortless to deploy in the field and allows it to fold to a compact storage size.



NSN		Dimensions W x L x H	Folded Size	Capacity	Weight	Part No	Application	CA Prop 65
—		4 ft x 4 ft x 8 in 1.2 m x 1.2 m x 203 mm	8 in x 11 in x 5 in 203 mm x 279 mm x 127 mm	79 gal 299 L	6 lbs 3 kg	SL-44 SPILL BERM	General secondary containment	⚠
■	4235-01-562-6025 (tan)	4 ft x 6 ft x 8 in 1.2 m x 1.8 m x 203 mm	8 in x 11 in x 6 in 203 mm x 279 mm x 152 mm	119 gal 450 L	8 lbs 4 kg	SL-46 SPILL BERM		⚠
—		4 ft x 8 ft x 8 in 1.2 m x 2.4 m x 203 mm	8 in x 11 in x 7 in 203 mm x 279 mm x 178 mm	159 gal 602 L	5 lbs 11 kg	SL-48 SPILL BERM		⚠
■	4235-01-562-3899 (tan)	6 ft x 6 ft x 8 in 1.8 m x 1.8 m x 203 mm	11 in x 11 in x 8 in 279 mm x 279 mm x 203 mm	179 gal 678 L	18 lbs 8 kg	SL-66 SPILL BERM		⚠
—		8 ft x 8 ft x 8 in 2.4 m x 2.4 m x 203 mm	11 in x 14 in x 8 in 279 mm x 356 mm x 203 mm	318 gal 1204 L	20 lbs 9 kg	SL-88 SPILL BERM		⚠
		8 ft x 10 ft x 8 in 2.4 m x 3.0 m x 203 mm	11 in x 14 in x 18 in 279 mm x 356 mm x 457 mm	398 gal 1507 L	23 lbs 10 kg	SL-810 SPILL BERM		⚠

⚠ WARNING: This product can expose you to chemicals including diisononyl phthalate and lead, which are known to the State of California to cause cancer and birth defects or other reproductive harm. For more information go to www.P65Warnings.ca.gov.

Ground and Track Berm Guards

Improve berm longevity without sacrificing functionality

- Available in heavy-duty coated polyester or for infrequent use, in economical and lightweight coated vinyl
- Non-absorbent material won't get soggy
- Use with all drive-through berms

Ground mats – Create a smooth, uniform deployment area with this heavy-duty woven fabric. Place under berm for improved wear resistance.

Track mats – Protection inside the berm for extra protection along tire paths. Thick, durable black woven fabric protects floors and walls from abrasion caused by skidding, turning, and braking.



	NSN	Dimensions W x L x H	Description	Application
■	4235-01-618-7897	3 ft x 10 ft Spill berm guard 0.9 m x 3.0 m	Track mats (Set of 2)	Interior berm protection
■	4235-01-618-7902	3 ft x 16 ft Spill berm guard 0.9 m x 4.9 m		
■	4235-01-618-7906	3 ft x 26 ft Spill berm guard 0.9 m x 7.9 m		
■	4235-01-618-7911	3 ft x 30 ft Spill berm guard 0.9 m x 9.1 m		
■	4235-01-618-8187	3 ft x 36 ft Spill berm Guard 0.9 m x 11.0 m		
■	4235-01-618-8193	3 ft x 54 ft Spill berm guard 0.9 m x 16.5 m		
■	4235-01-618-8542	3 ft x 56 ft Spill berm guard 0.9 m x 17.1 m	Ground mats (Set of 2)	Under berm protection
■	4235-01-618-8532	4 ft x 6 ft Spill berm guard 1.2 m x 1.8 m		
■	4235-01-618-7901	6 ft x 10 ft Spill berm guard 1.8 m x 3.0 m		
■	4235-01-618-8264	6 ft x 16 ft Spill berm guard 1.8 m x 4.9 m		
■	4235-01-618-7881	6 ft x 26 ft Spill berm guard 1.8 m x 7.9 m		
■	4235-01-618-7917	6 ft x 30 ft Spill berm guard 1.8 m x 9.1 m		
■	4235-01-618-8190	6 ft x 36 ft Spill berm guard 1.8 m x 11.0 m		
■	4235-01-618-7891	6 ft x 54 ft Spill berm guard 1.8 m x 16.5 m		
■	4235-01-618-6850	6 ft x 56 ft Spill berm guard 1.8 m x 17.1 m		



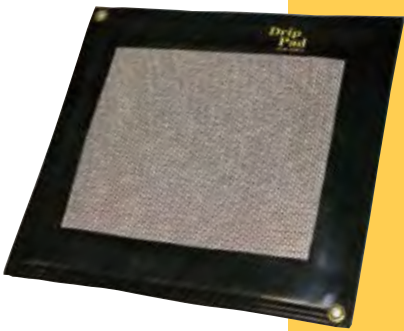
Light-duty ground and track berm guards used for lighter weight vehicles.

Drip Berms

Capture small oil leaks and drips before they contaminate the ground or create unsafe work surfaces

- Made from UV and chemical resistant modified PVC
- Replaceable inner pad absorbs a total of 5 quarts
- Coated mesh outer layer traps coarse debris
- Lightweight, flexible, and portable—great for containing small oil drips from leaky vehicles, industrial machinery equipment, hydraulic lines, pipes, and drums
- Models with weighted bottom holds berm in place in winds up to 50 mph

These drip pads feature replaceable, oil-only sorbent within a welded leakproof barrier. Rated for drive-over applications, pads include brass grommets in opposing corners for anchoring. Anchoring stakes not included. Pads come in two sizes; extended model is weighted to keep it down in high winds. Outer shell is reusable with optional refill sorbent packs. Helps comply with EPA for spill prevention (SPCC).



Regular Drip Berm 21-in x 23-in.



Extended Drip Berm 24-in x 36-in.



Position drip berm in tight spaces between machinery to capture oily leaks.

NSN		Footprint	Capacity	Weight	Folded Size	Part No	CA Prop 65	Application
—		16 in x 24 in 406 mm x 610 mm	4 quarts 4L	1.5 lbs 1 kg	n/a	BCI DB-16 Drip Spill Berm	⚠	Pipe or line drips, fluid transfer, vehicle maintenance
		21 in x 23 in 533 mm x 584 mm	5 quarts 5L	2 lbs 1 kg	n/a	BCI DB-21 DRIP SPILL BERM	⚠	
		22 in x 22 in weighted 559 mm x 559 mm	5 quarts 5L	5 lbs 2 kg	n/a	BCI DB-22 DRIP SPILL BERM	⚠	
		22 in x 22 in weighted w/ chock block 559 mm x 559 mm	5 quarts 5L	12 lbs 5 kg	n/a	BCI-DB-22-CHK	⚠	
■	4235-01-593-3974	24 in x 36 in weighted 610 mm x 914 mm	7 quarts 7L	7 lbs 3 kg	12 in x 24 in 305 mm x 610 mm	BCI EXT-DB DRIP SPILL BERM	⚠	

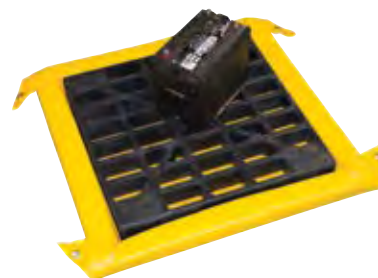
⚠ WARNING: This product can expose you to chemicals including lead, which is known to the State of California to cause cancer and birth defects or other reproductive harm. For more information go to www.P65Warnings.ca.gov.

Battery/Maintenance Spill Pads

Compact and flexible spill containment deploys instantly in the shop or field

- No assembly required—simply unfold and use
- 2½-inch drive-over walls made of coated vinyl urethane foam
- Lightweight 18-ounce fabric is suitable for battery storage
- Also available in heavy-duty 30-ounce modified vinyl for maintenance applications
- Optional grate elevates products above fluid

Quickly contain minor spills and leaks during temporary storage of drums, machine parts, batteries, and equipment. Lightweight PVC coated fabric provides broad UV and chemical resistance. Anchor berm in place using the brass grommets in each corner. Anchor stakes not included. Order optional grates to keep products and machinery above fluid. Helps comply with EPA for spill prevention (SPCC).



The "speed-bump" design of the urethane foam walls allows for easy entry/exit with no memory loss.



Roll-over sidewalls offer easy drum placement – foam walls quickly spring back for secure containment. Custom sizes are available.

Footprint	Capacity	Weight	Folded Size	Part No	CA Prop 65	Application
2 ft x 2 ft x 2 in 0.6 m x 0.6 m x 51 mm	5 gal 19 L	3 lbs 1 kg	24 in x 24 in x 2 in 610 mm x 610 mm x 51 mm	SPILL PAD-22	⚠	Battery and parts storage
2 ft x 4 ft x 2 in 0.6 m x 1.2 m x 51 mm	10 gal 38 L	5 lbs 2 kg	24 in x 24 in x 4 in 610 mm x 610 mm x 102 mm	SPILL PAD-24	⚠	Fluid transfer
4 ft x 4 ft x 2 in 1.2 m x 1.2 m x 51 mm	15 gal 57 L	7 lbs 3 kg	28 in x 28 in x 10 in 711 mm x 711 mm x 254 mm	SPILL PAD-44	⚠	Drum storage

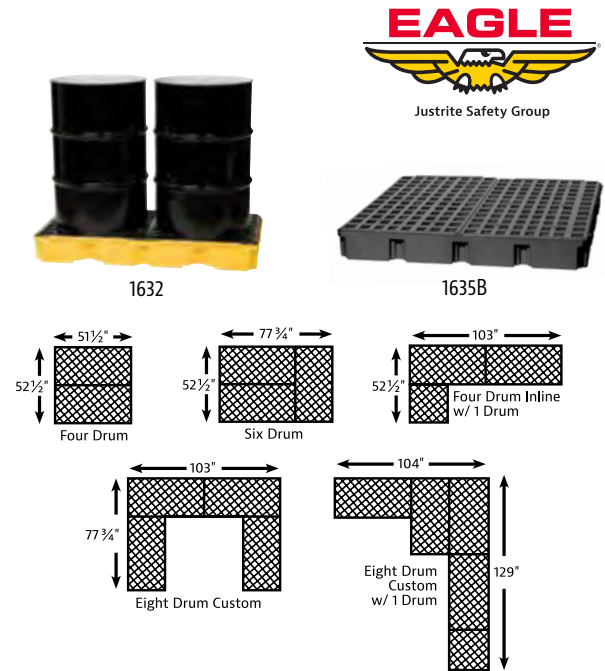
⚠ WARNING: This product can expose you to chemicals including diisononyl phthalate and lead, which are known to the State of California to cause cancer and birth defects or other reproductive harm and nickel, which is known to the state of California to cause cancer. For more information go to www.P65Warnings.ca.gov.



Eagle Modular Spill Platforms

Create your own spill-control system for drum filling and dispensing operations

- Seamless construction eliminates leaks
- High density polyethylene (HDPE) construction with lead-free UV protectant provides excellent chemical resistance and impact durability for long life
- Removable HDPE flat top grates for simplified cleaning
- Black models and grates made with 100% recycled HDPE
- Forklift pockets on most models for easy relocation
- Use optional Sump-to-Sump™ drain kit to join platforms together and gain full compliance with regulations for sump capacity. Includes one pair rubber grommets and one polytetrafluoroethylene (PTFE) transfer tube. (Patent No US 6,622,879,B1)
- Load and unload heavy drums with ease using optional ramp with anti-skid diamond pattern—use with most platform sizes



Description	Sump Capacity Gal/L	Load-bearing* Capacity lb/kg	External W x D x H	Compliance	Model Black	Model Yellow	Compatible w/Ramp	Forklift Pockets
1 drum platform	15	2000	26.25 x 26 x 6.5 in 667 x 661 x 166 mm	—	1633B	1633	No	No
1 drum platform w/drain	56.8	907			1633BD	1633D		
2 drum platform	30	5000	26.25 x 51.5 x 6.5 in 667 x 1309 x 166 mm		1632B	1632	Yes	Yes
2 drum platform w/drain	113.6	2268			1632BD	1632D		
3 drum in-line platform	45	5000	26.25 x 77.5 x 6.5 in 667 x 1969 x 166 mm	EPA, SPCC, OSHA	—	16323	Yes	Yes
4 drum square platform	60.5	10000	51.5 x 51.5 x 6.5 in 1309 x 1309 x 166 mm		1635B	1635	Yes	Yes
4 drum square platform w/drain	229.1	4536			1635BD	1635D		
4 drum in-line platform	60.5	10000	103.5 x 26.5 x 6.5 in 2629 x 667 x 166 mm		1647B	1647	Yes	No
4 drum in-line platform w/drain	229.1	4536			1647BD	1647D		
6 drum platform	88	10000	78.25 x 51.5 x 6.5 in 1988 x 1309 x 166 mm		1686B	1686	Yes	No
6 drum platform w/drain	333.2	4536			1686BD	1686D		
8 drum platform	121/458.1 (60.5/229.1 per side)	10000	103 x 51.5 x 6.5 in 2617 x 1309 x 166 mm		1688B	1688	Yes	No
8 drum platform w/drain		4536			1688BD	1688D		
Ramp	—	1500 680	45.5 x 32 x 8 in 1156 x 813 x 203 mm	—	1689B	1689	—	—

*Loads are stated as a total safe allowable uniform distributed load and apply to service temperature range of -30 F to 120 F (-34 C to 49 C)

Accessories	External W x D x H	Model
1 drum grate for 1 drum unit and 3 drum in-line	25.25 x 25.25 x 1.5 in 642 x 642 x 38 mm	1642S
2 drum grate for all sizes except 1 drum	25.25 x 50.5 x 1.5 in 642 x 1283 x 38 mm	1642IB
Sump-to-Sump™ drain kit	—	28800

Eagle Spill Containment Pallets

Keep workers safe from accidental slips indoors and avoid costly hazmat cleanup costs



- Seamless construction eliminates leaks, making them ideal for drum filling and dispensing operations—models available with and without drain
- High density polyethylene (HDPE) construction with lead-free UV protectant provides excellent chemical resistance and impact durability for long life
- Black models and grates made with 100% recycled HDPE
- Removable HDPE flat top grates for simplified cleaning
- Forklift pockets make relocation easy
- Models available for high capacity sump applications, as well as nestable pallets for minimizing storage space requirements when not in use
- Load and unload heavy drums with ease using optional ramp with anti-skid diamond pattern—use with most pallet sizes
- EPA compliant and supports SPCC, unless noted



1645BND



1640BND



1646

Description	Sump Capacity Gal/L	Load-bearing* Capacity lb/kg	External W x D x H	Compliance	Model Black	Model Yellow	Compatible w/Ramp
2 drum pallet	66	4000	51 x 26.25 x 13.75 in	EPA, SPCC, OSHA	1620BND	1620ND	No
2 drum pallet w/drain	249.9	1814	1296 x 667 x 350 mm		1620B	1620	
4 drum square pallet	66	8000	51.5 x 51.5 x 8 in		1645BND	1645ND	Yes
4 drum square pallet w/drain	249.9	3629	1309 x 1309 x 204 mm		1645B	1645	
4 drum square pallet, high capacity	132	8000	52.5 x 51 x 13.75 in		1640BND	1640ND	Yes
4 drum square pallet w/drain, high capacity					499.7	3629	
4 drum nestable pallet	66	6000	58.5 x 58.5 x 7.75 in		—	1646	Yes
	249.9	2722	1486 x 1486 x 197 mm				
Ramp	—	1500 680	45.5 x 32 x 8 in 1156 x 813 x 203 mm	—	1689B	1689	—

*Loads are stated as a total safe allowable uniform distributed load and apply to service temperature range of -30 F to 120 F (-34 C to 49 C)

Replacement Grates	External W x D x H	Model
2 drum grate for all models except 1646	25.25 x 50.5 x 1.5 in 642 x 1283 x 38 mm	1642IB
2 drum grate for model 1646	25.25 x 50.5 x 1.75 in 642 x 1283 x 45 mm	1642B

U.S. Chemical Storage® Customized Buildings and Pre-Engineered Outdoor Safety Lockers

Basic Concepts (BCI), a market leader in the creation of innovative spill containment solutions, offers a wide range of chemical storage through affiliation with U.S. Chemical Storage®. U.S. Chemical Storage® is dedicated to keeping people, facilities and environments safe with customizable buildings and pre-engineered chemical storage lockers.

Select custom chemical storage buildings for a variety of government and commercial chemical storage applications, including hazardous material, hazardous waste, flammable liquids, lithium batteries, chemical consolidation, medical and laboratory facilities, and more.

We are proud to be an American-owned company that serves our nation's government and qualifying federal organizations with the responsibility to protect the American people.

Why choose customized chemical storage buildings from U.S. Chemical Storage®?

- Free expert chemical storage consultation
- Continuously welded heavy-gauge steel construction
- Tubular steel framing
- Galvanized steel grate flooring
- Standard and custom sizes available
- Third-party approvals, including FM and Warnock Hersey
- 15-year structural warranty
- Application-based accessories
- Chemical- and weather-resistant coating—inside and out
- Third-party compliant accessories
- Turnkey design, delivery and installation



Non-combustible, CHEMloc™ pallet and tote storage building featuring heating, racking systems and explosion relief panels.



Four-hour fire-rated, SUPERloc™ compliant paint storage building with three-compartment construction and integral dry chemical fire suppression system.

U.S. Chemical Storage® Custom Fire-Rated Buildings



Fire-rated chemical storage buildings offer unmatched safety and security for storing flammable and combustible materials.

The **two-hour fire-rated** FIREloc™ storage building is designed to be placed within 10- to 30-ft (3.1- to 9.1-m) of existing structures and/or property lines.*

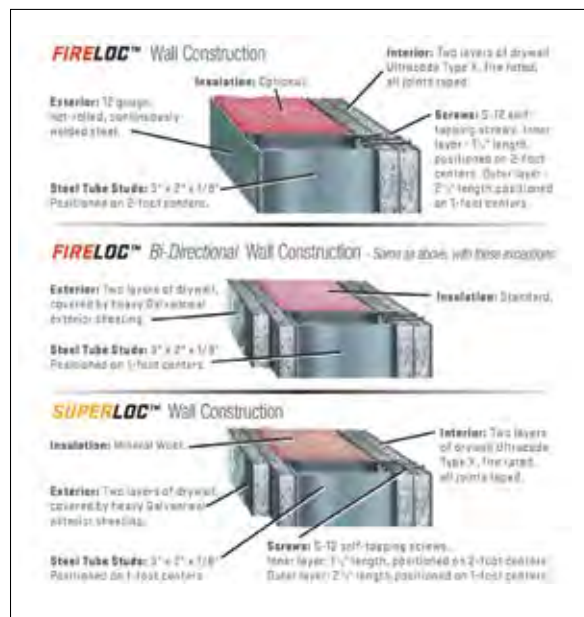
The **four-hour fire-rated** SUPERloc™ chemical storage buildings can be located 10-ft (3.1-m) from, or within existing structures.*

All U.S. Chemical Storage® fire-rated buildings use third-party tested, listed or approved wall designs.

Customizable designs and sizes are available for all product lines. Single-piece unit lengths are available up to 12-ft (3.7-m) wide by 52-ft (15.8-m) long by 13-ft (4-m) high. Modular, two-piece, units are available in larger sizes. Large single units have the ability to store up to 72 pallets and totes.

U.S. Chemical Storage® offers turnkey solutions, including design, delivery, installation and service for your specific chemical and material storage projects.

*Check with local authorities about fire separation distances for your specific chemical storage applications.



Fire-rated wall construction with tubular supports.



Four-hour fire-rated, 64-drum, SUPERloc™ chemical storage building with explosion-proof (EP) lighting, EP mechanical ventilation, and push-back racking.

U.S. Chemical Storage® Pre-Engineered Outdoor Safety Lockers



When full customization is not necessary, these non-combustible outdoor lockers, constructed with heavy gauge galvanized steel and built-in secondary containment, are fully compliant, including meeting EPA 40CFR, NFPA 30 and NFPA 1 regulations. FM-approved and backed by a 15-year structural warranty, non-combustible models store flammable, combustible and other hazardous chemicals. Available in sizes ranging from 2- through 16-drum capacities, pre-engineered lockers are offered with a variety of options and accessories, including explosion-relief panels (ERP), to keep hazardous material storage safe and maintained.*

These lockers feature:

- Heavy-gauge galvanized steel construction
- Secondary containment—leakproof all-welded sump
- Galvanized steel grate flooring
- 54-in (1372-mm) wide steel door system with three-point lock hardware on sizes 6-drum and larger—accepts pallet load. Smaller 2-drum and 4-drum come with 42-in (1067-mm) door for loading drums via a ramp and dolly.
- Natural draft ventilation
- NFPA diamond decal for identification of contents
- Forklift channels for easy relocation
- Anchoring plates for maximum hold-down protection
- Multiple static grounding connections
- Chemical- and UV-resistant coating—inside and out
- FM-approved and EPA compliant



Wide 54-inch door permits loading of drums via a dolly or pallet.

55-Gal Drum Capacity	Sump Capacity	Nominal Outside Dimensions W x D x H		Standard Safety Lockers		Lockers with Explosion-Relief Panels		CA Prop 65
		Exterior	Interior	Model No	Weight	Model No	Weight	
2	120 gal 454 L	5 ft x 3 ft x 6 ft 3 in 1524 mm x 914 mm x 1905 mm	4 ft 6 in x 2 ft 6 in x 4 ft 7.5 in 1372 mm x 762 mm x 1410 mm	DS02NR	982 lbs 446 kg	DS02NRX	1069 lbs 485 kg	⚠
4	100 gal 379 L	5 ft x 5 ft x 6 ft 3 in 1524 mm x 1524 mm x 1905 mm	4 ft 6 in x 4 ft 6 in x 5 ft 2 in 1372 mm x 1372 mm x 1575 mm	DS04NR	1341 lbs 609 kg	DS04NRX	1428 lbs 648 kg	⚠
6	140 gal 530 L	7 ft x 5 ft x 8 ft 1 in 2134 mm x 1524 mm x 2464 mm	6 ft 6 in x 4 ft 6 in x 7 ft 1981 mm x 1372 mm x 2134 mm	DS06NR	1658 lbs 753 kg	DS06NRX	1745 lbs 792 kg	⚠
9	198 gal 750 L	7 ft x 7 ft x 8 ft 1 in 2134 mm x 2134 mm x 2464 mm	6 ft 6 in x 6 ft 6 in x 7 ft 1981 mm x 1981 mm x 2134 mm	DS09NR	2101 lbs 953 kg	DS09NRX	2203 lbs 1000 kg	⚠
12	253 gal 958 L	7 ft x 9 ft x 8 ft 1 in 2134 mm x 2734 mm x 2464 mm	6 ft 6 in x 8 ft 6 in x 7 ft 1981 mm x 2591 mm x 2134 mm	DS12NR	2442 lbs 1108 kg	DS12NRX	2616 lbs 1187 kg	⚠
16	326 gal 1234 L	9 ft x 9 ft x 8 ft 1 in 2734 mm x 2734 mm x 2464 mm	8 ft 6 in x 8 ft 6 in x 7 ft 2591 mm x 2591 mm x 2134 mm	DS16NR	2959 lbs 1343 kg	DS16NRX	3126 lbs 1418 kg	⚠

*Check with local authorities about fire separation distances for your specific chemical storage applications. In addition to non-combustible models, fire-rated construction is available with a 2-hour or 4- hour fire rating.

⚠ WARNING: This product can expose you to chemicals including lead, which is known to the State of California to cause cancer and birth defects or other reproductive harm. For more information go to www.P65Warnings.ca.gov.

Accessories for Pre-Engineered Lockers

Customize an outdoor safety locker to your specific application. We provide free, expert advice to ensure our chemical storage solution will meet your requirements.

- Explosion relief panels to reduce the potential damage associated with an explosion
- Explosion-proof ventilation equipment for the safe removal of noxious or ignitable fumes
- Wet or dry fire suppression systems for added protection against accidental fires
- Vapor detection sensors and leak detection alarm systems for extra security
- Comfort heating and cooling for employees from 50°F to 70°F
- Process heating and cooling for your chemicals from 40°F to 250°F
- Fiberglass grating and poly liners for acids and corrosives
- Shelving and lighting options
- Emergency eyewash and shower systems
- Racking systems, floor rollers, and ramps
- Partition walls—solid and wire
- Door options—hinged, sliding, or coiling



Position a fire-rated locker close to your building for convenient access to contents.



Optional 60-inch double-door model simplifies loading palletized drums.

DynaLoc™ Explosives Storage Magazines

Safe, secure storage and transportation of both high and low explosives and ammunition

From gun powder to fireworks, ammunition to dynamite, all types of explosives present dangers. Improper storage methods pose major threats to our safety and livelihood. For this reason, the federal government mandates the use of magazines for storing all classes of explosive materials. ATF CFR 555 identifies five classes of storage magazines and provides clear construction specifications for each one.

All DynaLoc magazines and day boxes meet or exceed ATF 27 CFR, Part 555.208 and DoD 5100 for the safe storage of:

- Explosives
- Pyrotechnics
- Weapons
- Ammunition
- Detonators
- Blasting agents: caps, fuses
- Flashbang grenades
- Bombs



Temporarily store and safely transfer flashbangs in a Type 3 DynaLoc day box.



Explosives should be safely stored when not in use in ATF- and DoD-compliant DynaLoc Storage Magazines.

Type 2 Outdoor Magazines

Portable outdoor storage of your high explosives. Many models include forklift pockets for easy relocating.

- Bullet-resistant
- Fire-resistant
- Weather-resistant
- Theft-resistant
- ¼-inch plate steel construction lined with 3 inches of non-sparking hardwood
- Secure double locking door system—welded-on hinges and hasps cannot be removed when the door is closed and locked
- Static grounding system prevents direct contact with the ground, meeting NFPA 70



Type 2 Indoor Magazines

Store high explosives (up to 50 lbs.) inside your facility. Front-open (cabinet) and top-open styles available.

- Bullet-resistant
- Theft-resistant
- 12-gauge steel construction lined with ¾-inch or ½-inch of hardwood
- Secure double locking door system—welded-on hinges and hasps cannot be removed when the door is closed and locked
- Durable 4-inch casters allow mobility (on select models)



Available in 4 types with a wide range of sizes, choose from over 70 pre-fabricated magazines or customize to meet your specifications.

Type 3 Day Boxes & IME/DOT Transportation Day Boxes

For the transfer and temporary storage of explosives. Lightweight IME/DOT day boxes are safe for transporting explosives on public highways.

- Fire-resistant
- Weather-resistant
- Theft-resistant
- Single lock door system features welded-on hinges and hasps—cannot be removed when the door is closed and locked
- 12-gauge steel construction lined with ¾-inch of hardwood (day boxes) or a laminate interior that meets IME SLP 22 requirements (IME/DOT transportation day boxes)



Type 4 Indoor or Outdoor Magazines

Long-term storage of low explosives. All include forklift pockets and crane lifting eyes to easily move or relocate.

- Fire-resistant
- Weather-resistant (not required for indoors)
- Theft-resistant
- Double locking door system features ¼-inch steel hood for security
- 12-gauge steel construction lined with ¾-inch of hardwood or non-sparking material
- Mount on open channel construction to prevent contact with the ground



Hughes Safety Showers and Eye/Face Washes

Emergency response to treat eye injuries from chemical splashes, caustic burns, fine particulates or flying debris

Accidents can happen in even the most careful environments and delay in relief can range from a mild inconvenience to catastrophic. The first 10 seconds following exposure is critical. Emergency safety showers and eye wash equipment provide the first line of defense against potential hazards.



Hughes Safety Showers

Trusted Reliability & Complete Compliance

Models available to comply with ANSI American National Standards Institute, support OSHA requirements, meet European standard EN15154, and many tested and approved by Underwriters Laboratories—classified to ANSI Z358.1.





Over 60 models plus custom-designed equipment to fit your specific application.

Eye/Face Wash Equipment

Available in plumbed, fixed installations or self-contained, portable units in a variety of materials.

Indoor Emergency Safety Showers

Heated and unheated safety showers from simple wall- or ceiling-mounted units to free-standing models, or combination units with body spray and eye/face wash.

Mobile Emergency Safety Showers

Designed for environments where no water supply is available, a constant water supply cannot be relied upon or when existing safety showers are undergoing maintenance.

Outdoor Emergency Safety Showers

An extensive selection for handling challenging outdoor conditions, both hot or cold climates. Self-draining showers reduce overheating in hot climates; jacketed and heated models are suitable for cold climates.

Emergency Tank Showers

Tank showers are effective in environments where tepid water, or a constant supply of water, cannot be guaranteed. Models are available to suit different operating environments and climates, from heated units to insulated showers that provide additional protection.



Temperature Controlled Emergency Safety Showers

Intended for use in low ambient temperatures and are designed to remain on standby to deliver warm water for over 15 minutes conforming to ANSI standards.

Decontamination Showers

Portable, decontamination showers remove contaminants from protective clothing prior to removal. Quick set-up, with optional shelters to contain contaminated water.

Justrite® Noise Reduction Barriers

Combat the threat of hearing loss at the source

- Features a unique acoustic core to absorb noise and a vinyl outer layer to reflect noise
- Panels are foldable for easy transportation and storage, and can be assembled quickly by one person
- Non-irritant: Safe to handle without protective clothing
- Water and fire-resistant: Meets NFPA 701
- Steel frame easily assembles and links for continuous protection and performance
- Mount on standard link fence, scaffolding, or steel frame

Justrite noise reducing panels feature an innovative design that provides exceptional noise reduction protection, without disturbing the environment. Our noise reduction barriers are modular and versatile. Each basic panel is fitted with brass eyelets with grommets, while premium panels include hook and loop fasteners and magnets for a seamless, secure link between panels.



Use noise reduction barriers to surround generators, cooling and heating systems, or other noise-generating equipment.



Barriers create a sound-minimizing enclosure between a job site and pedestrian walkway.

Noise Reduction Products

Basic (Includes Brass Eyelet Grommets)

4'x6' Noise Reduction Barrier Panels
4'x8' Noise Reduction Barrier Panels

Premium (Includes Hook and Loop Fasteners and Magnets)

4'x6' Noise Reduction Barrier Panels
4'x8' Noise Reduction Barrier Panels

Barrier Kits (Include Frame Kit and 1 Base)

4'x6' Noise Reduction Barrier Panels
4'x8' Noise Reduction Barrier Panels

Optional Replacement Parts

4' Noise Barrier Steel Frame
6" Stacking Pins with Collar
Base for Barrier Frame (Feet)
Rail Clamps
Pig Tail Gravity Drop Locking



Basic noise-reducing panels feature brass eyelets and grommets on tops and sides for easy attachment to fencing.

⚠ WARNING: This product can expose you to chemicals including diisononyl phthalate and lead, which are known to the State of California to cause cancer and birth defects or other reproductive harm. For more information go to www.P65Warnings.ca.gov.

What Is SPCC?

SPCC stands for **Spill Prevention Control and Countermeasures** and is a part of the Clean Water Act found in 40 CFR part 112 and is regulated by the EPA. Its purpose is to prevent oil and oil-related materials from reaching navigable waters and adjoining shorelines.

Many military installations and training grounds require a SPCC plan that includes secondary containment for oil and fuel storage containers. Some local state and municipal governments have separate requirements that must be adhered to in addition to the federal regulations.

Under the Clean Water Act, 40 CFR part 112 a facility is subject to the SPCC regulations if it has a total aboveground oil storage capacity greater than 1,320 U.S. gallons or 42,000 U.S. gallons of buried storage capacity. Any container with a capacity of 55 gallons or more should be included in the site capacity assessment.

All types of hydrocarbon based oils are subject to the SPCC regulations. Common oils addressed by the SPCC regulations are: petroleum; fuel oil; sludge; oil refuse; oil mixed with wastes; fats, all animal oils; vegetable oils, synthetic oils and mineral oils.

Any site that stores, processes, refines, uses or consumes oil and is a non-transportation-related operation is subject to the SPCC rule. Facilities that meet these criteria must comply with the SPCC regulations.

If you have any questions about what type of products would meet your spill prevention requirements, please contact one of our military sales representatives who can assist you in selecting the ideal design type and size, as well as provide advice on the acquisition process. Many of our products are available via NSN and GSA Advantage.





Basic Concepts, Inc.
1310 Harris Bridge Road
Anderson, SC 29621-3410
1-800-285-4203

To learn more about our products,
please visit **[basicconcepts.com](https://www.basicconcepts.com)**